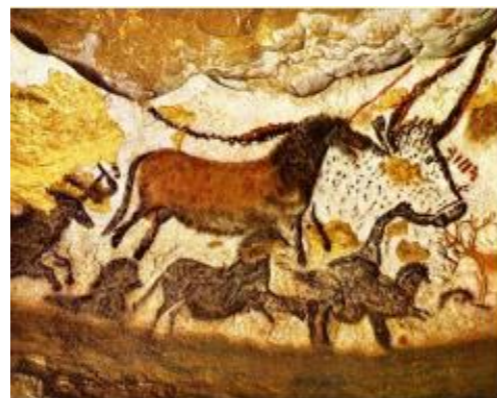




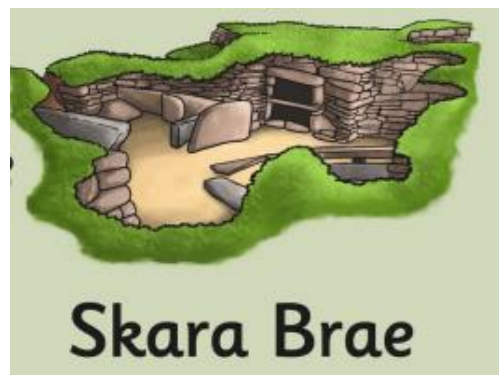
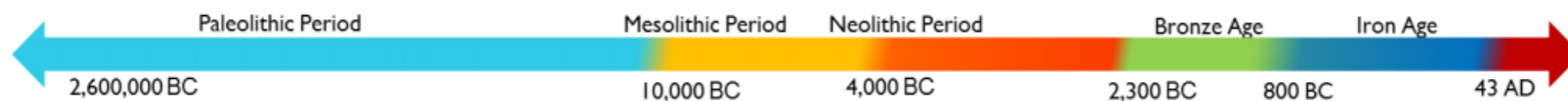
### Periods of the Stone Age

Palaeolithic (Early Stone Age)	Longest period of the Stone Age. It covered more than 3 million years of human history. It is when humans learned how to make stone tools, fire and hunt.
Mesolithic (Middle Stone Age)	This is time when the icy glaciers were melting and the seas were rising. People developed the tools they needed to deal with these changes. They became better at certain hunting skills such as using harpoons (long spears) for catching fish.
Neolithic (New Stone Age)	The time period after the Mesolithic period when people moved away from hunting and gathering and became farmers in many parts of the world. People still continued to use stone tools.



**Cave paintings** - Early humans may have used art as a way of helping themselves in their struggle for survival. Paintings of animals on cave walls are common. The famous cave paintings at Lascaux in southwest France are about 18,000 years old.

Vocabulary	
Antler	Special kind of bone growth on the heads of male deer that was used to make tools, such as soft hammers or needles
Flint	Type of sedimentary rock that is very glassy and produces a sharp edge when knapped.
Hammer Stone	Hard rounded rock used to make stone tools, such as hand axes out of rock like flint.
Hand Axe	Stone tools that could be used for cutting and chopping.
Homo Sapiens	The species now known as humankind.
Hunter-gatherer	People who got their food by gathering plants or hunting animals. They didn't farm.
Ice Age	Period of time when the world was much colder and many parts were covered in glacier (large amounts of ice)
Mammoth	This animal lived during the Ice Age and may have died off because they struggled to adapt to changing climates.
Neanderthal	These were our closest relatives and they died out roughly 24,000 years ago.
Nomadic people	A group of people that move from place to place in search for food and shelter.
Prehistory	The period of time before people started writing. In Britain, prehistory ended when the Romans arrived.

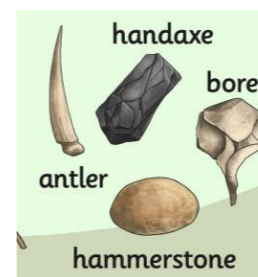
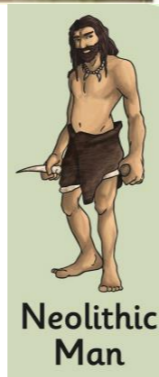


**Skara Brae** - a stone-built Neolithic settlement, located in the Orkney region in Scotland. It is a cluster of eight houses, which was occupied between 3000 and 2500 BC.



### Key Questions

- What was life like in the Palaeolithic & Mesolithic era?
- What changed from the Palaeolithic & Mesolithic era?
- What did people eat in Palaeolithic & Mesolithic era?
- How did the search for food change in the Neolithic era?
- What tools were used in the Neolithic era?
- What can we understand about the Neolithic era from Skara Brae?



**tools**

Trip to Bishops Wood - understanding why and how Mesolithic people moved around?

Discovering how Neolithic people lived?

