

# NORTON JUXTA KEMPSEY C.E. PRIMARY SCHOOL

*"Together, with the love and joy of God, we will discover, develop & maximise our unique potential."*



## SUPPORTING CHILDREN WITH MEDICAL CONDITIONS POLICY

Head Teacher	<b>Julia Dean</b>
Chair of Governors	<b>Daisie Barnett</b>
Date Reviewed	<b>21st July 2025</b>
Date of next Review	<b>September 2026</b>
Date Approved by GB	<b>25<sup>th</sup> September 2025</b>

## AMENDMENT HISTORY

<b>Date</b>	<b>Issue</b>	<b>Reason for Amendment</b>	<b>Person Responsible</b>
23/07/2021	0.01	Roles & responsibilities Insert staffing	HT
23/07/2024	1.01	Change Individual Health Plan/s to Individual Care Plan/s	Review Committee
23/0720/24	1.02	Mental Health & behaviour updated November 2018	Review Committee
23/07/2024	1.03	Equalities Act amended 1 Jan 2024	Review Committee
23/07/2024	1.04	Delete Template B: Parental agreement for setting to administer medicine. replace with Template B: Controlled Medication Form	Review Committee
23/07/2024	1.05	Delete Template C: Record of medicine administered to an individual child, replace with Template C: Medical Form	Review Committee
23/07/2024	1.06	Delete Template D: Record of medicine administered to all children, replace with Template D: Prescribed Medicines administered to children	Review Committee

# SUPPORTING CHILDREN WITH MEDICAL CONDITIONS POLICY

*The Father has loved us so much! He loved us so much that we are called children of God. And we really are his children. – 1 John 3:1 – ICB*

The value of love is at the heart of both the Christian faith and our vision here at NJK.

God's love for all people inspires us to give love in abundance.

We value and care for ourselves, others and the world around us as God's creation; demonstrating our values of friendship, compassion, forgiveness and respect.

We believe this is of the highest importance to enable pupils to explore their differences with tolerance and mutual respect.

Our school vision is integral to everything we do at NJK.

We want to discover and maximise each child's unique potential.

We aim to deliver a joyful and inspiring curriculum and school experience where every child feels loved, valued and cherished.

This policy is written in line with the requirements of:-

Children and Families Act 2014 - section 100

Supporting pupils with medical conditions at school updated August 2017

0-25 SEND Code of Practice, DfE 2023

Mental Health and behaviour in schools: departmental advice for school staff, DfE June 2014 updated November 2018

Equalities Act 2018 Amended 1 January 2024

Schools Admissions Code, DfE 2021

This policy should be read in conjunction with the following school policies:

SEND Policy

Safeguarding Policy

Off site visits Policy

Complaints Policy

This policy will be reviewed annually.

## Definitions of medical Conditions

Pupils' medical needs may be broadly summarised as being of two types: -

**Short-term** affecting their participation at school because they are on a course of medication

**Long-term** potentially limiting access to education and requiring on-going support, medicines or care while at school to help them to manage their condition and keep them well, including monitoring and intervention in emergency circumstances. It is important that parents feel confident that the school will provide effective support for their child's medical condition and that pupils feel safe.

Some children with medical conditions may be considered disabled. Where this is the case governing bodies **must** comply with their duties under the Equality Act 2010. Some may also have special educational needs (SEND) and may have a statement or Education, Health and Care Plan (EHCP). Where this is the case this policy should be read in conjunction with the 0-25 SEND Code of Practice and the school's SEND policy/SEND Information Report and the individual care plan will become part of the EHCP.

## The statutory duty of the governing body

The governing body remains legally responsible and accountable for fulfilling their statutory duty for supporting pupils at school with medical conditions. The governing body of Norton Juxta Kempsey C.E. Primary School fulfil this by: -

- Ensuring that arrangements are in place to support pupils with medical conditions. In doing so we will ensure that such children can access and enjoy the same opportunities at school as any other child.
- Taking into account that many medical conditions that require support at school will affect quality of life and may be life-threatening. Some will be more obvious than others and therefore the focus is on the needs of each individual child and how their medical condition impacts on their school life.
- Ensuring that the arrangements give parents and pupils confidence in the school's ability to provide effective support for medical conditions, should show an understanding of how medical conditions impact on a child's ability to learn, as well as increase their confidence and promote self-care. We will ensure that staff are properly trained to provide the support that pupils need.
- Ensuring that no child with a medical condition is denied admission or prevented from taking up a place in school because arrangements for their medical condition have not been made. However, in line with safeguarding duties, we will ensure that pupils' health is not put at unnecessary risk from, for example, infectious diseases, and reserve the right to refuse admittance to a child at times where it would be detrimental to the health of that child or others to do so.
- Ensuring that the arrangements put in place are sufficient to meet our statutory duties and ensure that policies, plans, procedures and systems are properly and effectively implemented.
- Developing a policy for supporting pupils with medical conditions that is reviewed regularly and accessible to parents and school staff (this policy).
- Ensuring that the policy includes details on how the policy will be implemented effectively, including a named person who has overall responsibility for policy implementation (see section below on policy implementation).
- Ensuring that the policy sets out the procedures to be followed whenever the school is notified that a pupil has a medical condition (see section below on procedure to be followed when notifications is received that a pupil has a medical condition).
- Ensuring that the policy covers the role of individual care plans, and who is responsible for their development, in supporting pupils at school with medical conditions (see section below on individual care plans).
- Ensuring that the school policy clearly identifies the roles and responsibilities of all those involved in arrangements for supporting pupils at school with medical conditions and how they will be supported, how their training needs will be assessed and how and by whom training will be commissioned and provided (see section below on staff training and support).

- Ensuring that the school policy covers arrangements for children who are competent to manage their own health needs and medicines (see section below on the child's role in managing their own medical needs).
- Ensuring that the policy is clear about the procedures to be followed for managing medicines including the completion of written records (see section below on managing medicines on school premises).
- Ensuring that the policy sets out what should happen in an emergency situation (see section below on emergency procedures).
- Ensuring that the arrangements are clear and unambiguous about the need to support actively pupils with medical conditions to participate in school trips and visits, or in sporting activities, and not prevent them from doing so (see section on day trips, residential trips and sporting activities).
- Considering whether to
  - Develop transport care plans in conjunction with the LA for pupils with life-threatening conditions who use home- to- school transport
  - Purchase and train staff in the use of defibrillators
  - Once regulations are changed consider holding asthma inhalers for emergency use.
- Ensuring that the policy is explicit about what practice is not acceptable (see section on unacceptable practice).
- Ensuring that the appropriate level of insurance is in place and appropriate to the level of risk (see section on Liability and Indemnity).
- Ensuring that the policy sets out how complaints may be made and will be handled concerning the support to pupils with medical conditions (see section on complaints).

## Policy implementation

The statutory duty for making arrangements for supporting pupils at school with medical conditions rests with the governing body. The governing body have conferred the following functions of the implementation of this policy to the staff below, however, the governing body remains legally responsible and accountable for fulfilling our statutory duty.

The overall responsibility for the implementation of this policy is given to the Headteacher who will also be responsible for ensuring that sufficient staff are suitably trained and will ensure cover arrangements in cases of staff absences or staff turnover to ensure that someone is always available and on-site with an appropriate level of training.

The Headteacher will also be responsible for briefing supply teachers, preparing risk assessments for school visits and other school activities outside of the normal timetable and for the monitoring of individual care plans, although this responsibility could be given to the Assistant Headteacher.

The SENDCO will be responsible in conjunction with parents/carers, for drawing up, implementing and keeping under review the individual care plan for each pupil and making sure relevant staff are aware of these plans

All members of staff are expected to show a commitment and awareness of children's medical conditions and the expectations of this policy. All new members of staff will be inducted into the arrangements and guidelines in this policy upon taking up their post.

### **Procedure to be followed when notification is received that a pupil has a medical condition**

This covers notification prior to admission, procedures to cover transitional arrangements between schools or alternative providers, and the process to be followed upon reintegration after a period of absence or when pupils' needs change. For children being admitted to Norton Juxta Kempsey C.E Primary School for the first time with good notification given, the arrangements will be in place for the start of the relevant school term. In other cases, such as a new diagnosis or a child moving to Norton Juxta Kempsey C.E. Primary School mid-term, we will make every effort to ensure that arrangements are put in place within two weeks.

In making the arrangements, we will take into account that many of the medical conditions that require support at school will affect quality of life and may be life-threatening. We also acknowledge that some may be more obvious than others. We will therefore ensure that the focus is on the needs of each individual child and how their medical condition impacts on their school life. We aim to ensure that parents/carers and pupils can have confidence in our ability to provide effective support for medical conditions in school, so the arrangements will show an understanding of how medical conditions impact on the child's ability to learn, as well as increase their confidence and promote self-care.

We will ensure that staff are properly trained and supervised to support pupils' medical conditions and will be clear and unambiguous about the need to actively support pupils with medical conditions to participate in school trips and visits, or in sporting activities, and not prevent them in doing so. We will make arrangements for the inclusion of pupils in such activities with any adjustments as required unless evidence from a clinician such as a GP states that this is not possible. We will make sure that no child with a medical condition is denied admission or prevented from attending the school because arrangements for supporting their medical condition have not been made. However, in line with our safeguarding duties, we will ensure that all pupils' health is not put at unnecessary risk from, for example infectious disease. We will therefore not accept a child in school at times where it would be detrimental to the health of that child or others.

Norton Juxta Kempsey C.E. Primary School does not have to wait for a formal diagnosis before providing support to pupils. In cases where a pupil's medical condition is unclear, or where there is a difference of opinion, judgements will be needed about what support to provide based on available evidence. This would normally involve some form of medical evidence and consultation with parents/carers. Where evidence conflicts, some degree of challenge may be necessary to ensure that the right support can be put in place. These discussions will be led by the Headteacher and following these discussions an individual care plan will be written in conjunction with the parent/carers by the SENDCO and be put in place.

### **Individual Care plans**

Individual care plans will help to ensure that Norton Juxta Kempsey C.E. Primary School effectively supports pupils with medical conditions. They will provide clarity about what needs to be done, when and by whom. They will often be essential, such as in cases where conditions fluctuate or where there is a high risk that emergency intervention will be needed. They are likely to be helpful in the majority of other cases too, especially where medical conditions are long-term and complex. However, not all children will require one. The school, healthcare professional and parent/carer should agree, based on evidence, when a care plan would be inappropriate or disproportionate. If consensus cannot be reached the Headteacher is best placed to take a final view. A flow chart for identifying and agreeing the support a child needs and developing an individual care plan is provided at Appendix A.

Individual care plans will be easily accessible to all who need to refer to them, while preserving confidentiality. Plans will capture the key information and actions that are required to support the child effectively. The level of detail within the plan will depend on the complexity of the child's condition and the degree of support needed. This is important because different children with the same health condition may require very different support. Where a child has SEND but does not have a statement of EHC plan, their special educational needs should be mentioned in their individual care plan.

Individual care plans (and their review) should be drawn up in partnership between the school, parents/carers and a relevant healthcare professional e.g., school, specialist or children's community nurse, who can best advise on the particular needs of the child. Pupils should also be involved whenever appropriate. The aim should be to capture the steps which Norton Juxta Kempsey C.E. Primary School should take to help manage their condition and overcome any potential barriers to getting the most from their education. Partners should agree who will take the lead in writing the plan, but responsibility for ensuring it is finalised and implemented rests with the school.

Norton Juxta Kempsey C.E. Primary School will ensure that individual care plans are reviewed at least annually or earlier if evidence is presented that the child's needs have changed. They will be developed and reviewed with the child's best interests in mind and ensure that Norton Juxta Kempsey C.E. Primary School assesses and manages risks to the child's education, health and social wellbeing, and minimises disruption. Where a child is returning to school following a period of hospital education or alternative provision, we will work with the local authority and education provider to ensure that the individual care plan identifies the support the child will need to reintegrate effectively.

Template A provides a basic template for the individual care plan, and although this format may be varied to suit the specific needs of each pupil, they should all include the following information

- The medical condition, its triggers, signs, symptoms and treatments.
- The pupil's resulting needs, including medication (dose, side effects and storage) and other treatments, time, facilities, equipment, testing, access to food and drink where this is used to manage their condition, dietary requirements and environmental issues e.g., crowded corridors, travel time between lessons.
- Specific support for the pupil's educational, social and emotional needs - for example, how absences will be managed, requirements for extra time to complete exams, use of rest periods or additional support in catching up with lessons, counselling sessions.
- The level of support needed (some children will be able to take responsibility for their own health needs) including in emergencies. If a child is self-managing their medication, this should be clearly stated with appropriate arrangements for monitoring.
- Who will provide this support, their training needs, expectations of their role and confirmation of proficiency to provide support for the child's medical condition from a care professional; and cover arrangements for when they are unavailable?
- Who in the school needs to be aware of the child's condition and the support required?
- Arrangements for written permission from parents/carer and the Headteacher, for medication to be administered by a member of staff or self-administered by the pupil during school hours.

- Separate arrangements or procedures required for school trips or other school activities outside of the normal school timetable that will ensure the child can participate e.g., risk assessment.
- Where confidentiality issues are raised by the parent/child, the designated individual to be entrusted with information about the child's condition.
- What to do in an emergency, including whom to contact, and contingency arrangements. Some children may have an emergency care plan prepared by their lead clinician that could be used to inform development of their individual care plan

## Roles and responsibilities

Please refer to the section on policy implementation for the functions that have been delegated to different members of staff.

In addition, we can refer to the **Community Nursing Team** for support with drawing up Individual Care Plans, provide or commission specialist medical training, liaison with lead clinicians and advice or support in relation to pupils with medical conditions.

Other **healthcare professionals, including GPs and paediatricians** should notify the Community Nursing Team when a child has been identified as having a medical condition that will require support at school. Specialist local health teams may be able to provide support, and training to staff, for children with particular conditions (e.g., asthma, diabetes, epilepsy)

**Staff** a medical list will be updated every year and given to class teacher. This will include medical and pastoral information and must be kept safe and regularly updated throughout the year. List will be kept in classroom in designated confidential wallet. Wallet will contain a picture of child, an individual care plan and details of medical intervention and medication. If anything is flagged up, no matter how insignificant, this must be recorded on scholar pack.

**Pupils** with medical conditions will often be best placed to provide information about how their condition affects them. They should be fully involved in discussions about their medical support needs and contribute as much as possible to the development of, and comply with, their individual care plan. Other pupils will often be sensitive to the needs of those with medical conditions, and can, for example, alert staff to the deteriorating condition or emergency need of pupils with medical conditions.

**Parents/carers** should provide the school with sufficient and up-to-date information about their child's medical needs. They may in some cases be the first to notify the school that their child has a medical condition. Parents are key partners and should be involved in the development and review of their child's individual care plan and may be involved in its drafting. They should carry out any action they have agreed to as part of its implementation, e.g provide medicines and equipment and ensure they or another nominated adult are contactable at all times.

**Providers of health services** should co-operate with schools that are supporting children with medical conditions. They can provide valuable support, information, advice and guidance to schools, and their staff, to support children with medical conditions at school.

**Clinical commissioning groups (CCGs)** commission other care professionals such as specialist nurses. They have a reciprocal duty to co-operate under Section 10 of the Children Act 2004 (as described above for local authorities). The local Health and Well-being Board provides a forum for the local authority and CCGs to consider with other partners, including locally elected representatives, how to strengthen links between education, health and care settings.

The **Ofsted** inspection framework places a clear emphasis on meeting the needs of disabled children and pupils with SEND and considering the quality of teaching and the progress made by these pupils. Inspectors are already briefed to consider the needs of pupils with chronic or long-term medical conditions alongside these groups and to report on how well their needs are being met. Schools are expected to have a policy dealing with medical needs and to be able to demonstrate that it is being implemented effectively.

### **Staff training and support**

All staff who are required to provide support to pupils for medical conditions will be trained by the healthcare professional qualified to do so. The training need will be identified by the healthcare professional during the development or review of the individual care plan. We may choose to arrange training ourselves and will ensure that it remains up to date.

Training should be sufficient to ensure that staff are competent and have confidence in their ability to support pupils with medical conditions, and to fulfil the requirements set out in the individual care plans. They will need an understanding of the specific medical conditions they are being asked to deal with, their implications and preventative measures.

Staff must not give prescription medicines or undertake care procedures without appropriate training (updated to reflect any individual care plans). A first aid certificate does not constitute appropriate training in supporting children with medical conditions. Healthcare professionals, including the school nurse, can provide confirmation of proficiency of staff in a medical procedure, or in providing medication (see template).

All staff will receive induction training and regular whole school awareness training so that all staff are aware of the school's policy for supporting pupils with medical conditions and their role in implementing the policy. The Headteacher, will seek advice from relevant healthcare professions about training needs, including preventative and emergency measures so that staff can recognise and act quickly when a problem occurs.

The family of a child will often be key in providing relevant information to school staff about how their child's needs can be met, and parents will be asked for their views. They should provide specific advice but should not be the sole trainer.

### **The child's role in managing their own medical needs**

If, after discussion with the parent/carer, it is agreed that the child is competent to manage their own medication and procedures, they will be encouraged to do so. This will be reflected in the individual care plan.

Wherever possible children will be allowed to carry their own medicines and relevant devices or should be able to access their medication for self-medication quickly and easily; these will be stored in the cupboard in the school office to ensure that the safeguarding of other children is not compromised. Norton Juxta Kempsey C.E. Primary School does also recognise that children who take their medicines themselves and/or manage procedures may require an appropriate level of supervision. If it is not appropriate for a child to self-manage, then relevant staff will help to administer medicines and manage procedures for them.

If a child refuses to take medicine or carry out a necessary procedure, staff should not force them to do so, but follow the procedure agreed in the individual care plan. Parents will be informed so that alternative options can be considered.

### **Managing medicines on school premises and record keeping**

At Norton Juxta Kempsey C.E. Primary School the following procedures are to be followed:

- Medicines should only be administered at school when it would be detrimental to a child's health or school attendance not to do so.
- No child under 16 should be given prescription or non-prescription medicines without their parents written consent (see template B) - except in exceptional circumstances where the medicine has been prescribed to the child without the knowledge of the parents. In such cases, every effort should be made to encourage the child or young person to involve their parents while respecting their right to confidentiality.
- Where clinically possible, medicines should be prescribed in dose frequencies which enable them to be taken outside school hours.
- Norton Juxta Kempsey C.E. Primary School will only accept prescribed medicines, with written permission from parent/carer that are in-date, labelled, provided in the original container as dispensed by a pharmacist and include instructions for administration, dosage and storage. The exception to this is insulin which must be in-date but will generally be available to schools inside an insulin pen or a pump, rather than its original container.
- All medicines will be stored safely. Children should know where their medicines are at all times and be able to access them immediately. Where relevant, they should know who holds the key to the storage facility.
- Medicines and devices such as asthma inhalers, blood glucose testing meters and adrenaline pens should be always readily available in school office and not locked away. Asthma inhalers should be marked with the child's name.
- During school trips the first aid trained member of staff will carry all medical devices and medicines required.
- A child who has been prescribed a controlled drug may legally have it in their possession if they are competent to do so but passing it to another child for use is an offence. Monitoring arrangements may be necessary. Otherwise, we will keep all controlled drugs that have been prescribed for a pupil securely stored in a non-portable container and only named staff will have access. Controlled drugs should be easily accessible in an emergency. A record should be kept of any doses used and the amount of the controlled drug held in the school.
- Staff administering medicines should do so in accordance with the prescriber's instructions. Norton Juxta Kempsey C.E. Primary School will keep a record (see template C and D) of all medicines administered to individual children, stating what, how and how much was administered, when and by whom. Any side effects of the medication to be administered at school should be noted. Written records are kept of all medicines administered to children. These records offer protection to staff and children and provide evidence that agreed procedures have been followed.
- When no longer required, medicines should be returned to the parent/carer to arrange safe disposal. Sharps boxes should always be used for the disposal of needles and other sharps.

## Emergency procedures

The Headteacher will ensure that arrangements are in place for dealing with emergencies for all school activities wherever they take place, including school trips within and outside the UK, as part of the general risk management process.

Where a child has an individual care plan, this should clearly define what constitutes an emergency and explain what to do, including ensuring that all relevant staff are aware of emergency symptoms and procedures. Other pupils in the school should know what to do in general terms, such as informing a teacher immediately if they think help is needed.

If a child needs to be taken to hospital, staff should stay with the child until the parent arrives, or accompany a child taken to hospital by ambulance. Schools need to ensure they understand the local emergency services cover arrangements and that the correct information is provided for navigation systems.

### **Day trips, residential visits, and sporting activities**

We will actively support pupils with medical conditions to participate in day trips, residential visits and sporting activities by being flexible and making reasonable adjustments unless there is evidence from a clinician such as a GP that this is not possible.

We will always conduct a risk assessment so that planning arrangements take account of any steps needed to ensure that pupils with medical conditions can be included safely. This will involve consultation with parents/carers and relevant healthcare professions and will be informed by Health and Safety Executive (HSE) guidance on school trips.

### **Unacceptable practice**

Although staff at Norton Juxta Kempsey C.E. Primary School should use their discretion and judge each case on its merit with reference to the child's individual care plan, it is not generally acceptable practice to:

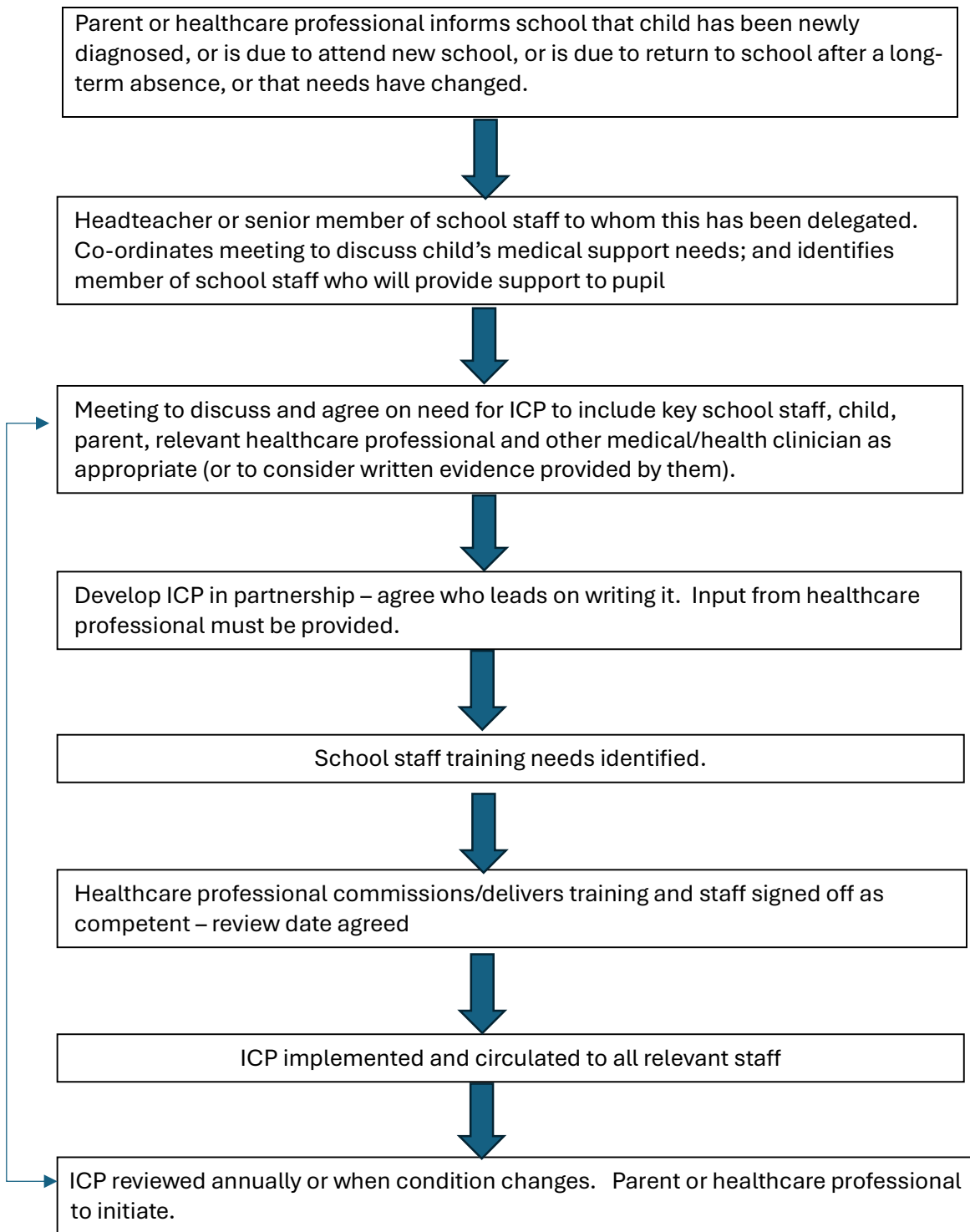
- Prevent children from easily accessing their inhalers and medication and administering their medication when and where necessary.
- Assume that every child with the same condition requires the same treatment.
- Ignore the views of the child or their parents/carers; or ignore medical evidence or opinion (although this may be challenged).
- Send children with medical conditions home frequently or prevent them from staying for normal school activities, including lunch, unless this is specified in their individual care plans.
- If the child becomes ill, send them to the school office or medical room unaccompanied or with someone unsuitable.
- Penalise children for their attendance record if their absences are related to their medical condition, e.g., hospital appointments.
- Prevent pupils from drinking, eating or taking toilet breaks whenever they need to in order to manage their medical condition effectively.
- Require parents/carers, or otherwise make them feel obliged, to attend school to administer medication or provide medical support to their child, including with toileting issues. No parent should have to give up working because the school is failing to support their child's medical needs.

- Prevent children from participating or creating unnecessary barriers to children participating in any aspect of school life, including school trips, e.g., by requiring parents to accompany the child.

## Complaints

Should parents/carers be unhappy with any aspect of their child's care at Norton Juxta Kempsey C.E. Primary School, they must discuss their concerns with the school. This will be with the child's class teacher in the first instance, with whom any issues should be addressed. If this does not resolve the problem or allay the concern, the problem should be brought to a member of leadership team, who will, where necessary, bring concerns to the attention of the Headteacher. In the unlikely event of this not resolving the issue, the parent/carer must make a formal complaint using the Avonreach Academy Trust's Complaints Procedure.

## Appendix A: Model process for developing care plans





## Template A: individual care plan

Name of school/setting

Norton Juxta Kempsey C.E. Primary School

Child's name

Group/class/form

Date of birth

Child's address

Medical diagnosis or condition

Date

Review date

### Family Contact Information

Name

Phone no. (work)

(home)

(mobile)

Name

Relationship to child

Phone no. (work)

(home)

(mobile)

### Clinic/Hospital Contact

Name

Phone no.

### G.P.

Name

Phone no.

Who is responsible for providing support in school

Describe medical needs and give details of child's symptoms, triggers, signs, treatments, facilities, equipment or devices, environmental issues etc

Name of medication, dose, method of administration, when to be taken, side effects, contra-indications, administered by/self-administered with/without supervision

Daily care requirements

Specific support for the pupil's educational, social and emotional needs

Arrangements for school visits/trips etc

Other information

Describe what constitutes an emergency, and the action to take if this occurs

Who is responsible in an emergency (*state if different for off-site activities*)

Plan developed with

Staff training needed/undertaken – who, what, when

Form copied to

(Pupil) – CLASS YEAR



## Template C: Medical Form

### Norton Juxta Kempsey CE Primary School

### MEDICAL FORM

This form is to be used for parental requests for the administration of an Emergency or Preventative medicine. ( eg Asthma inhalers, Prophylactic Eye drops, Epi pens and Ritalin)

<u>SECTION 1</u>	Date of request .....
Pupils Name .....	Class .....
Address .....	
Telephone Number .....	
Daytime Emergency Contact Number .....	
Parent/Guardian/ Carers Name .....	

<u>SECTION 2</u>
Name of Medication .....
Condition or Illness .....
Details of Dosage .....
Issuing Pharmacy .....
Date Prescribed .....
Date Medication Finishes .....

<u>SECTION 3</u>
Name of GP .....
Address .....
Telephone Number .....

<u>SECTION 4</u>
Arrangements agreed with parent(s) or carer(s) if child refuses to take medication
.....
.....

SECTION 5

I consent to my child being administered the prescribed medicine as detailed in Section 2 in accordance with the dosage at the following time(s)

- (i) between 8.30 am and 12.00 noon at .....
- (ii) between 12 noon and 3.10 pm at .....

I understand that the LEA, Governing Body of the School and Staff cannot accept responsibility for any adverse reaction my child may suffer as a consequence of being administered the prescribed medication at my request.

Signed ..... Parent/Guardian/Carer

Approval for request to administer medicine YES/NO

Signed ..... Headteacher    Date .....

## Template D Prescribed Medicines administered to children.

### Norton Juxta Kempsey CE Primary School

#### Record of prescribed medicines administered to children

Date	Pupil	Time	Medicine & Dosage	Condition	Administered by

## Template E: contacting emergency services

**Request an ambulance - dial 999, ask for an ambulance and be ready with the information below.**

**Speak clearly and slowly and be ready to repeat information if asked.**

1. your telephone number
2. your name
3. your location as follows [insert school/setting address]
4. state what the postcode is – please note that postcodes for satellite navigation systems may differ from the postal code
5. provide the exact location of the patient within the school setting
6. provide the name of the child and a brief description of their symptoms
7. inform Ambulance Control of the best entrance to use and state that the crew will be met and taken to the patient
8. put a completed copy of Template F by the phone